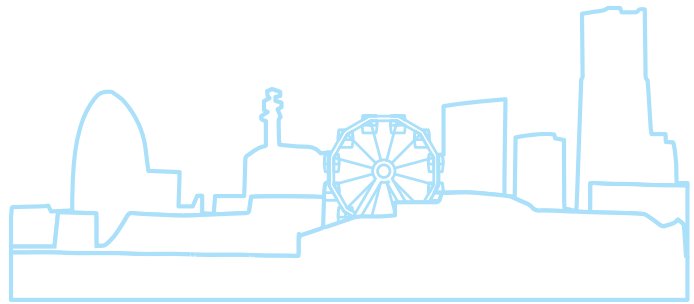
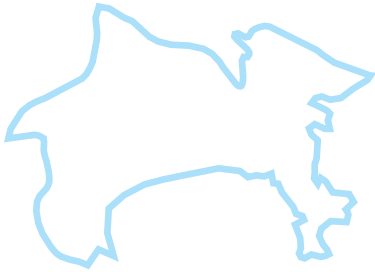


Yokohama Fact Sheet



Second Largest City in Japan

Second only to Tokyo



Yokohama

is the capital city of Kanagawa Prefecture



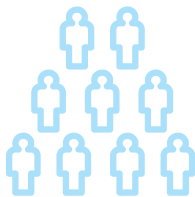
Humid Subtropical

(Cfa) climate



Four Distinct Seasons

with moderately hot summers and cold winters



Population of

3,750,395

(as of November, 2019)



Major Companies

Yokohama accommodates the headquarters of publicly traded businesses in various sectors. Popular names include **Nissan Motor Company Ltd** (automobiles), **Colowide Co., LTD.** (a restaurant chain), **JVKenwood Corp.** (audio), **Three F Co., LTD.** (a convenience store chain), **JGC Corporation** (construction), and **FANCL CORPORATION** (cosmetics). This concentration of major corporations, as well as its large population, enables Yokohama to carry out cutting edge field experiments.

Measures to Attract Business

Yokohama has been keen on attracting businesses. In fact, the city has attracted more foreign businesses than any other municipality apart from Tokyo. There were **182 foreign businesses** in Yokohama in 2016.

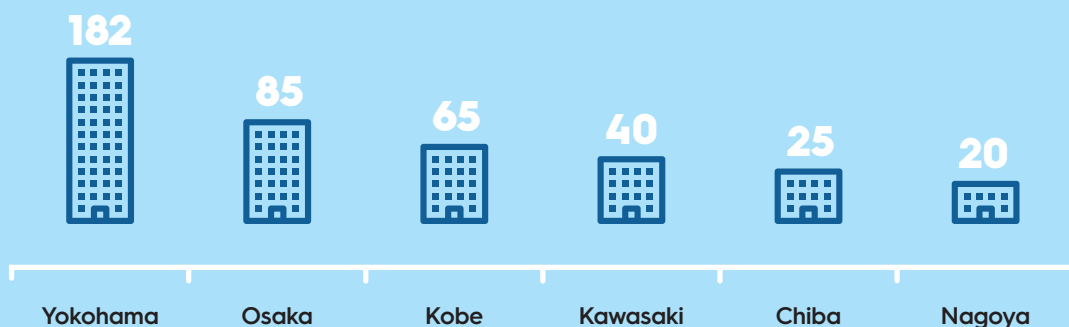


Figure 1. Toyo Keizai, For Research & Analysis, Data Bank SERIES 2016, Foreign Company Overview